

# DL 100

## Troubleshooting guide

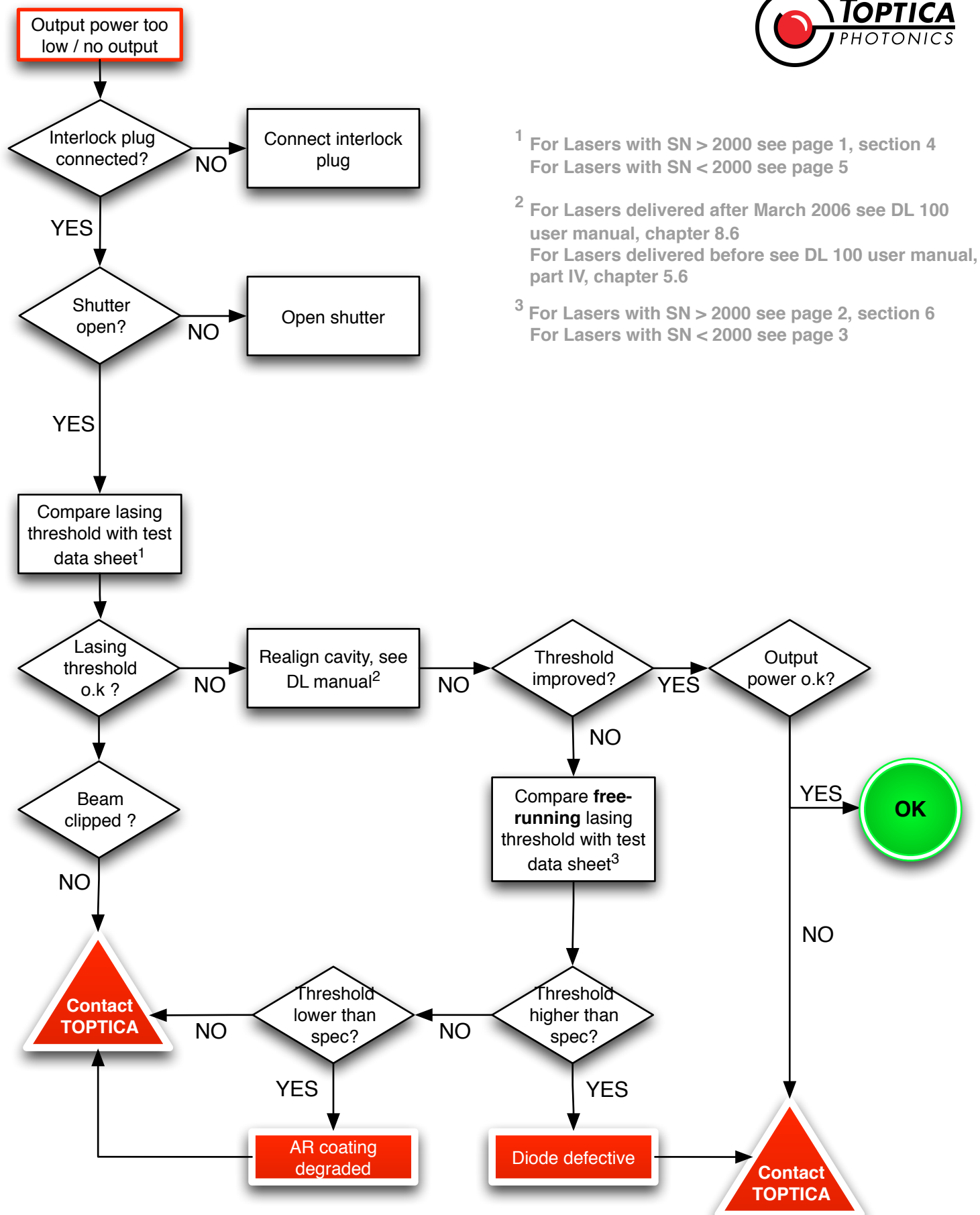
### WARNING

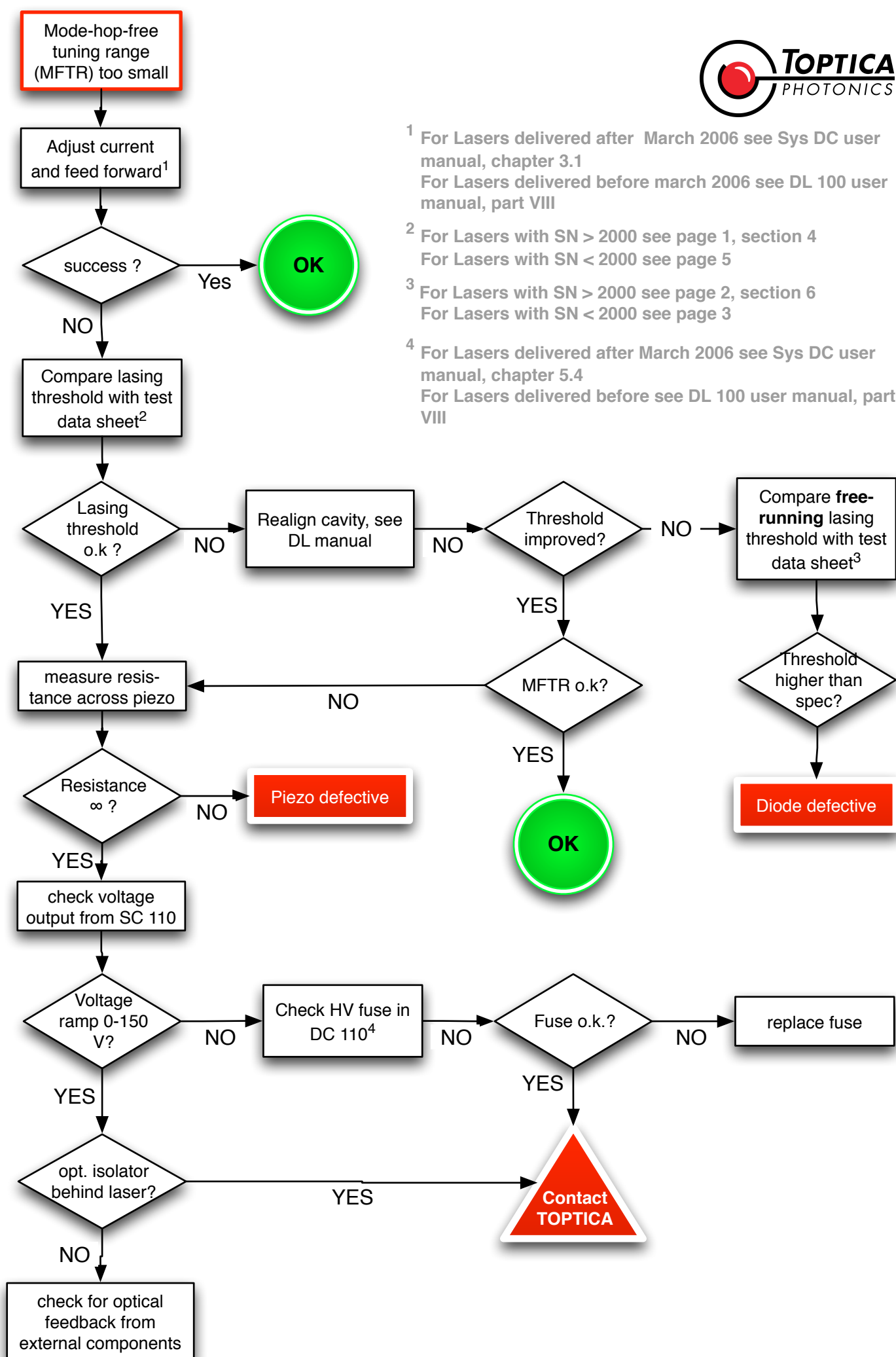
This troubleshooting guide represents only a coarse outline of the steps necessary to get the laser system back to its specification. It does only complement, not replace the user manual.

Before taking any of the following steps the user must familiarize himself with the hazards involved when maintaining a laser source. **READ AND FOLLOW THE SAFETY INSTRUCTIONS AND WARNINGS** in the user manual carefully before you proceed. TOPTICA cannot be held liable for injuries and / or damage caused by improper use of its lasers. If you feel unsure, please contact TOPTICA's service department first. Proceed at your own risk!

### NOTE

The references given in this guide are valid for the DL user manual, issue March 2006. Other (especially older) versions of the manual have a different structure or may not contain all the information. Please contact us if you wish to receive a printed copy of the most recent manual.





<sup>1</sup> For Lasers delivered after March 2006 see Sys DC user manual, chapter 3.1  
For Lasers delivered before March 2006 see DL 100 user manual, part VIII

<sup>2</sup> For Lasers with SN > 2000 see page 1, section 4  
For Lasers with SN < 2000 see page 5

<sup>3</sup> For Lasers with SN > 2000 see page 2, section 6  
For Lasers with SN < 2000 see page 3

<sup>4</sup> For Lasers delivered after March 2006 see Sys DC user manual, chapter 5.4  
For Lasers delivered before see DL 100 user manual, part VIII